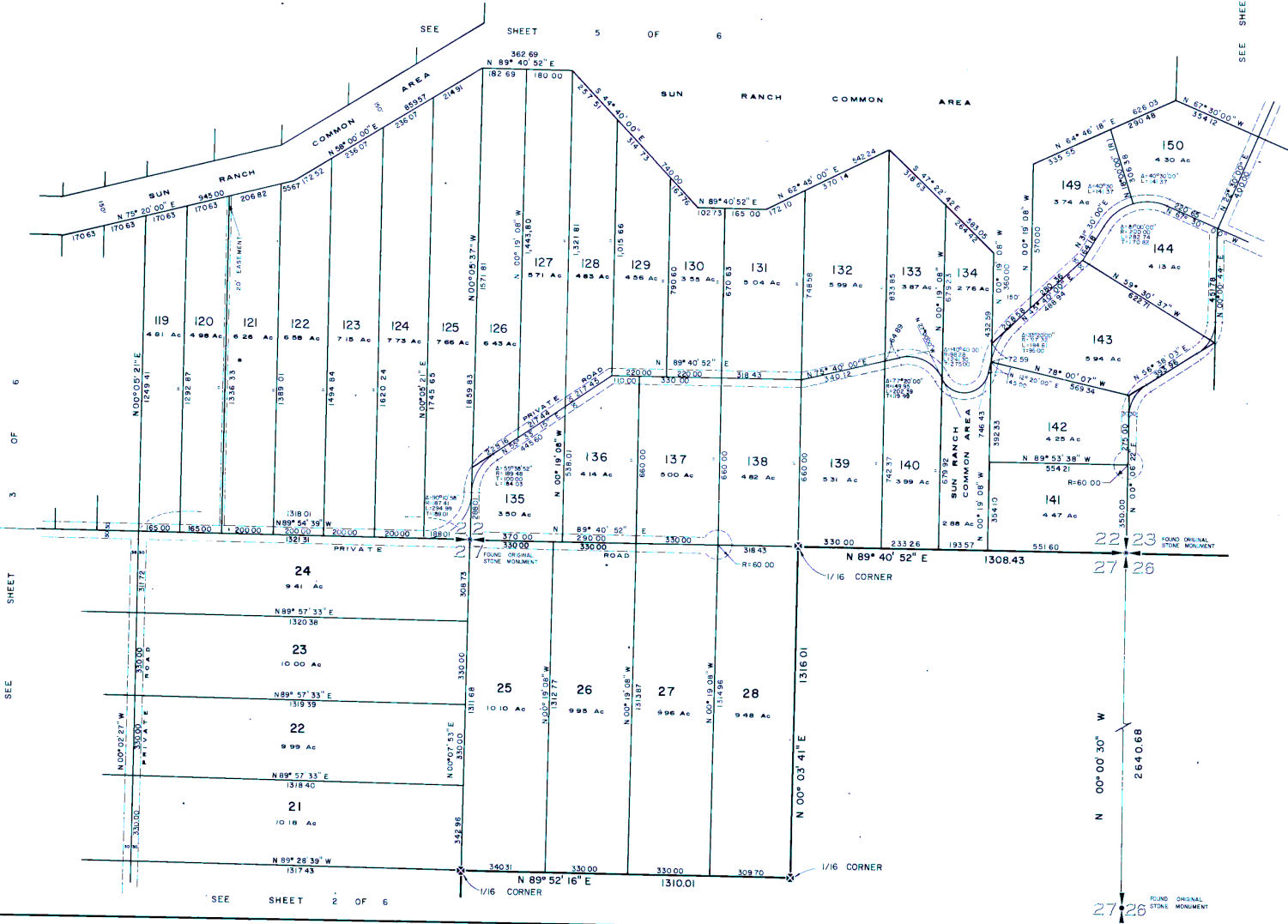


# CAPE LABELLE RANCHES

## OF SUN RANCH

PORTIONS OF SECTIONS 21, 22, 23, 27 & 28  
TOWNSHIP 36 NORTH, RANGE 30 EAST, W.M.

OKANOGAN COUNTY, WASHINGTON



SEE SHEET 6 OF 6

SEE SHEET 3 OF 6

SEE SHEET 4 OF 6

PREPARED BY  
**JONES ASSOCIATES, INC.**  
 ENGINEERS AND SURVEYORS  
 RELIEVE, WASHINGTON 98004  
 SCALE 1" = 200'

21 22  
 28 27

27 28  
 FOUND ORIGINAL STONE MONUMENT

SEE SHEET 2 OF 6