

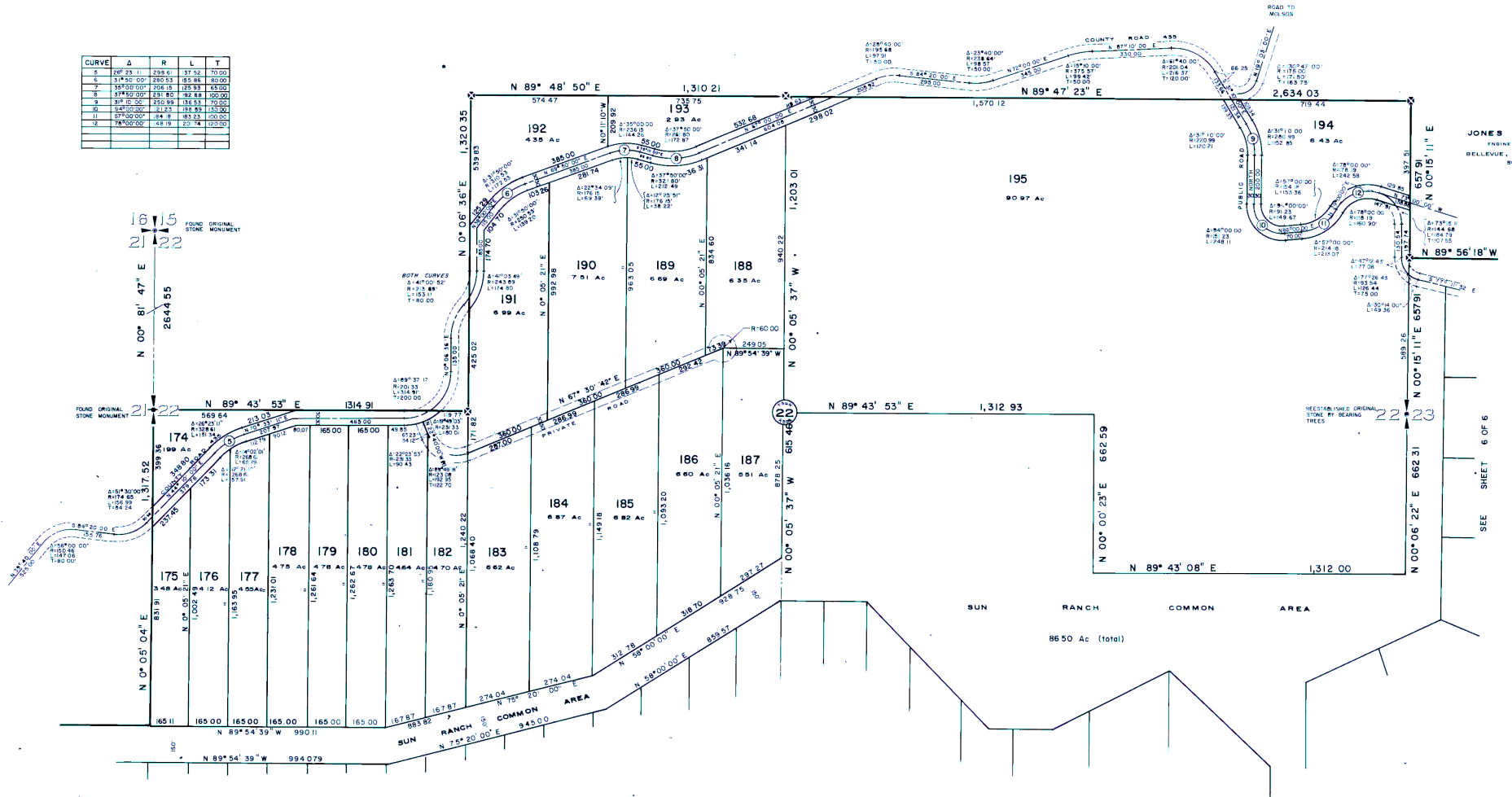
CAPE LABELLE RANCHES

OF SUN RANCH

PORTIONS OF SECTIONS 21, 22, 23, 27 & 28
TOWNSHIP 36 NORTH, RANGE 30 EAST, W.M.

OKANOGAN COUNTY, WASHINGTON

CURVE	Δ	R	L	T
1	28° 23' 11"	228.61	187.32	101.00
2	31° 45' 00"	220.53	35.88	30.00
3	35° 00' 00"	204.15	183.93	33.00
4	34° 50' 00"	221.85	187.41	100.00
5	31° 10' 00"	250.99	186.53	70.00
6	34° 00' 00"	213.23	108.82	113.00
7	37° 00' 00"	194.8	85.23	200.00
8	74° 00' 00"	48.19	20.74	103.00



PREPARED BY
JONES ASSOCIATES, INC.
 ENGINEERS AND SURVEYORS
 BELLEVUE, WASHINGTON 98004
 SCALE 1" = 200'

SEE SHEET 3 OF 6

SEE SHEET 4 OF 6

SEE SHEET 6 OF 6