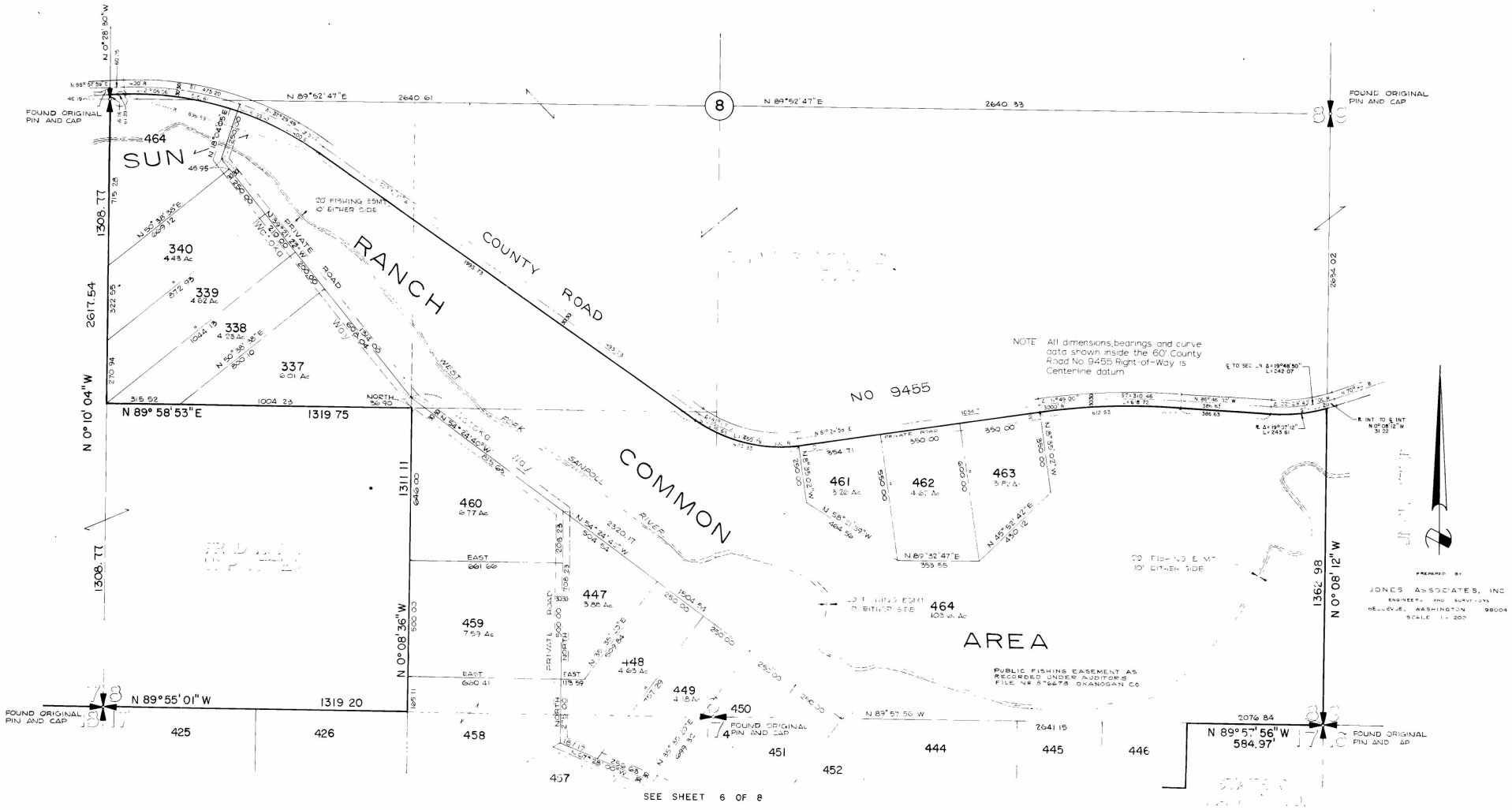


# LYMAN LAKE RANCHES OF SUN RANCH

DIVISION No. 1

PORTIONS OF SECTIONS 8, 16, 17, 18, 19, 20, & 21, TWP 35 N, RGE 31 E, WM.  
OKANOGAN COUNTY, WASHINGTON



PREPARED BY  
 JONES ASSOCIATES, INC.  
 ENGINEERS AND SURVEYORS  
 BELLEVUE, WASHINGTON 98004  
 SCALE 1" = 200'