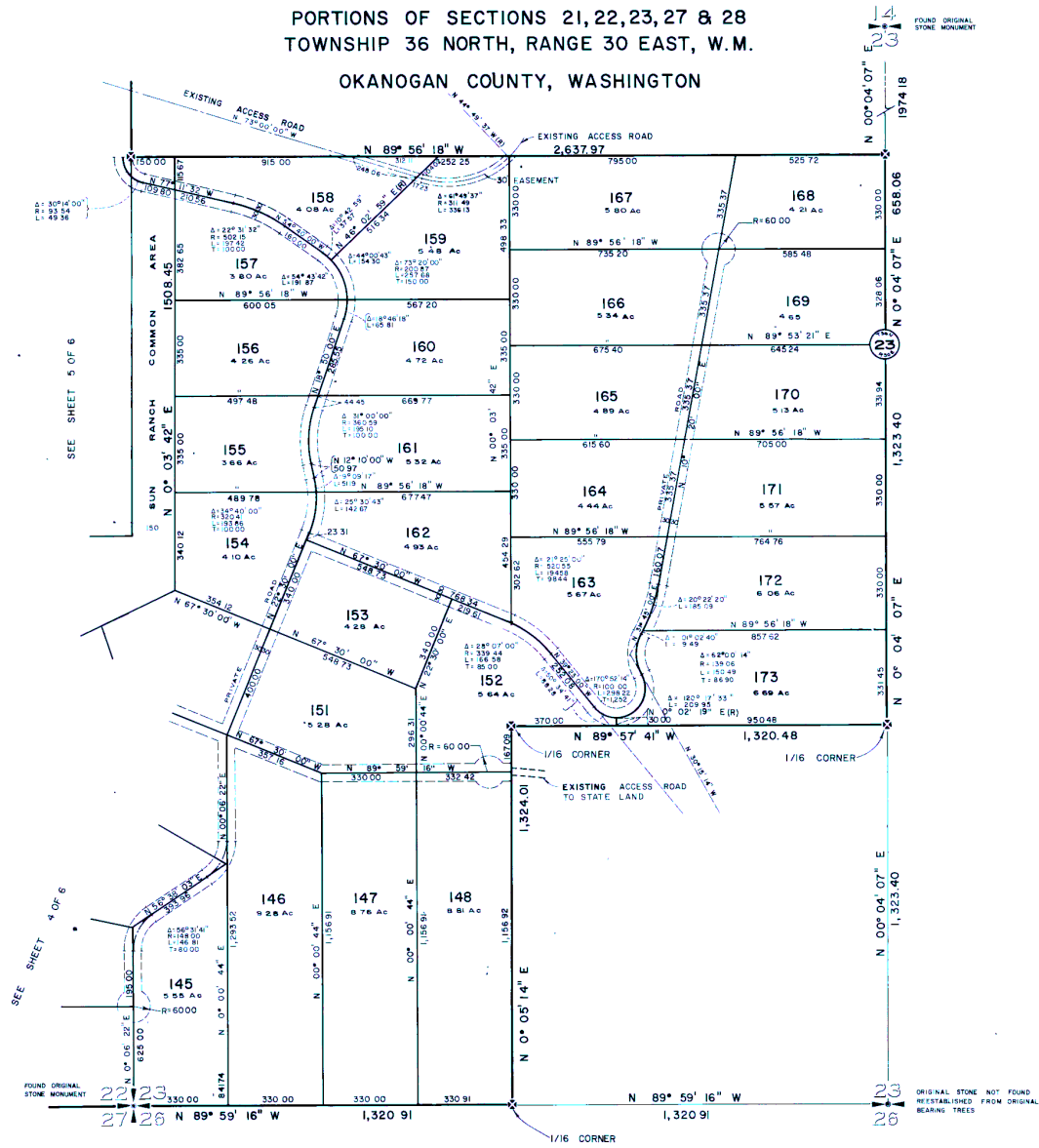


# CAPE LABELLE RANCHES

## OF SUN RANCH

PORTIONS OF SECTIONS 21, 22, 23, 27 & 28  
TOWNSHIP 36 NORTH, RANGE 30 EAST, W.M.

OKANOGAN COUNTY, WASHINGTON



PREPARED BY  
**JONES ASSOCIATES, INC.**  
 ENGINEERS AND SURVEYORS  
 BELLEVUE, WASHINGTON 98004  
 SCALE 1" = 200'