

CAPE LABELLE RANCHES

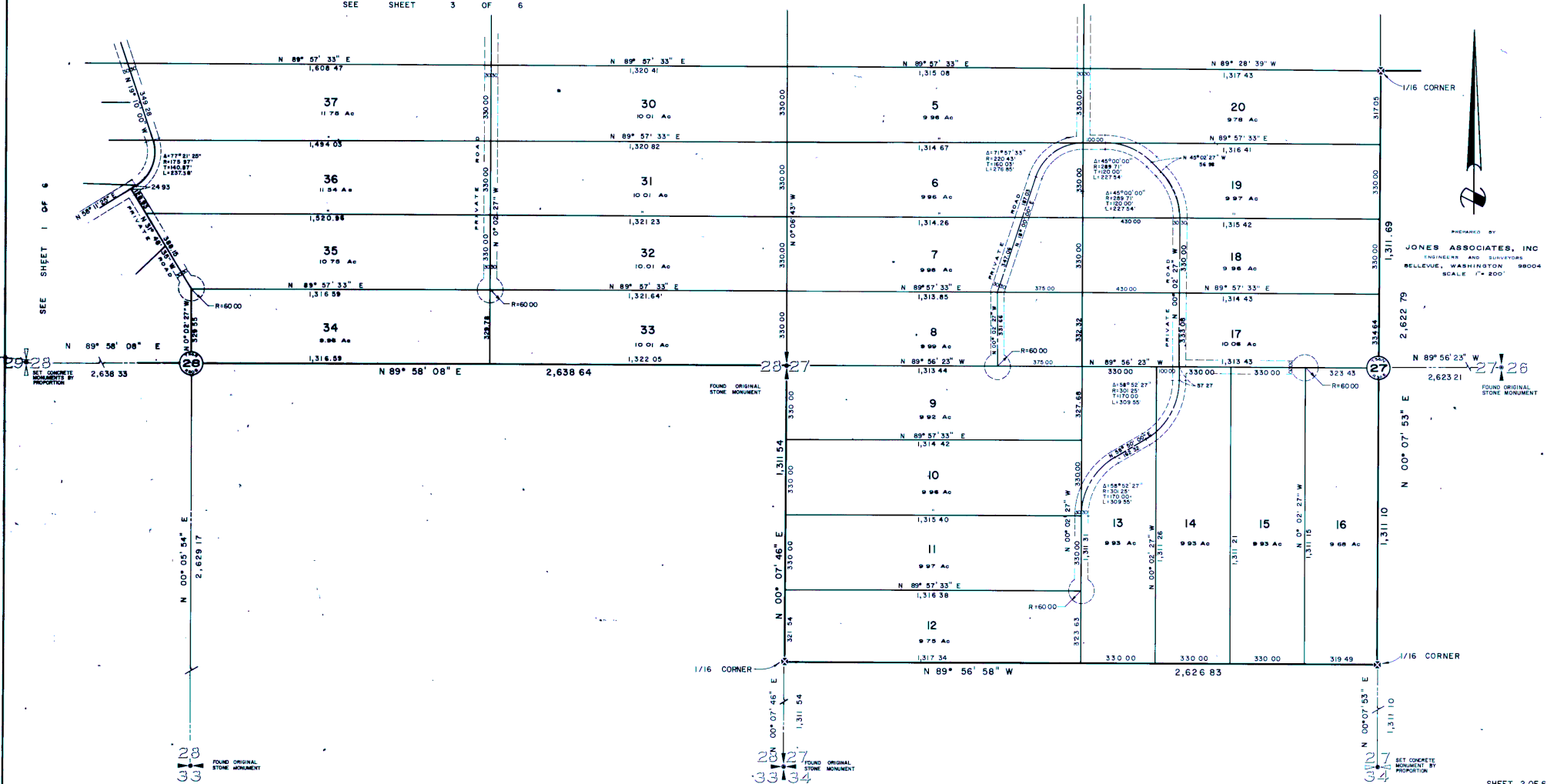
OF SUN RANCH

PORTIONS OF SECTIONS 21, 22, 23, 27 & 28
TOWNSHIP 36 NORTH, RANGE 30 EAST, W.M.

OKANOGAN COUNTY, WASHINGTON

SEE SHEET 3 OF 6

SEE SHEET 4 OF 6



PREPARED BY
JONES ASSOCIATES, INC.
 ENGINEERS AND SURVEYORS
 BELLEVUE, WASHINGTON 98004
 SCALE 1" = 200'